

Live to ride, ride to live

The use of Event Charts to capture and investigate loss of control motorcycle events in New Zealand

Lily Hirsch¹, Dave Moore², Alex Stedmon³, Hamish Mackie¹, Marcell Davison⁴ and Robyn Gardener⁵

¹Mackie Research ²Auckland University of Technology ³Coventry University ⁴New Zealand Transport Agency ⁵Accident Compensation Corporation

lily@mackieresearch.co.nz

AIM

This work sits within a wider exercise aimed at reducing the incidence and severity of loss-of-control motorcycle events on the northern Coromandel Loop in New Zealand. The aim of was to examine issues affecting the rider experience that could help inform education initiatives.

METHODOLOGY

The experiences of those involved in near-misses is often overlooked. 17 in-depth interviews using Event Charts (Moore 2007) were held on the Coromandel Peninsula – a popular riding destination in New Zealand. Event Charts follow the *Safe System* approach of acknowledging the range of factors which affect an incident. They help participants to critically think about their story, and help the researcher to identify and plot system-level interventions.

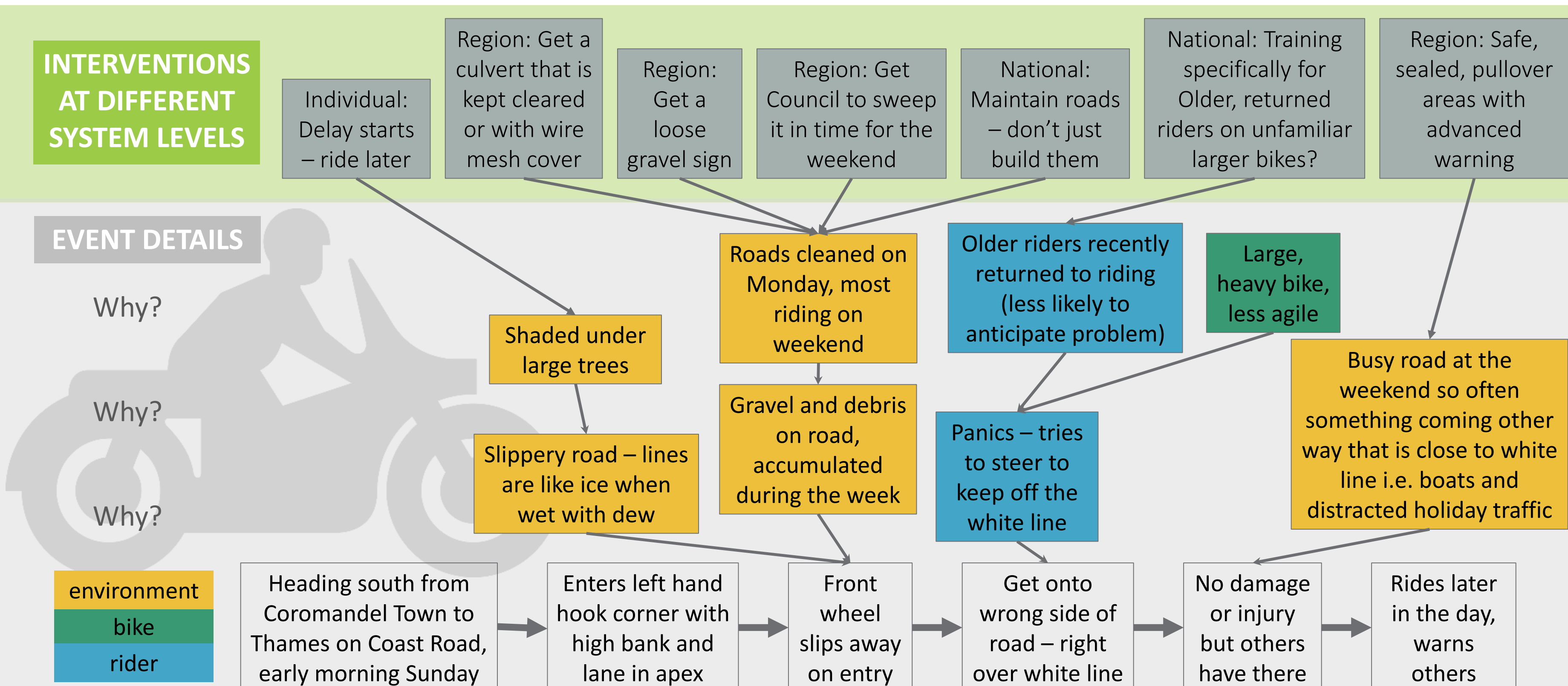
KEY FINDINGS

- 🌱 Fatigue and poor trip planning are major underlying precursors to errors. Riders need to learn to understand these signs
- 🌱 Sealed and pre-signed Passing Bays and Rest Areas are needed. Improved maintenance schedules would be beneficial
- 🌱 High-quality education initiatives that encourage the message that riders go out to practice and come home better riders
- 🌱 Address 'high-risk' curves in New Zealand

CONCLUSIONS

By better understanding factors from a 'system level', our findings may inform interventions and initiatives designed to contribute to a practical and pragmatic safety system.

EVENT CHART – COROMANDEL TOWN TO THAMES



Dekker, S. (2014). A Field Guide to Understanding Human Error. 3rd Edition, CRC Press.

Hollnagel, E. (2017). The Nitty Gritty of Human Factors. Human Factors and Ergonomics in Practice Improving System Performance & Human Wellbeing in the Real World. S. Shorrock and C. Williams, Ashgate Publishing.

McInally, S. (2003). R3: A model for motorcycle rider skill development. *Driver Behaviour and Training*. United Kingdom.

Moore, D. J. (2007). *A Systems Analysis of Quadbike Loss of Control Events on New Zealand Farms*. PhD, Massey University.

New Zealand Government and National Road Safety Committee (2016). Safer Journeys Action Plan 2016-2020.x